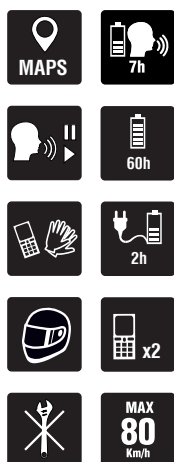
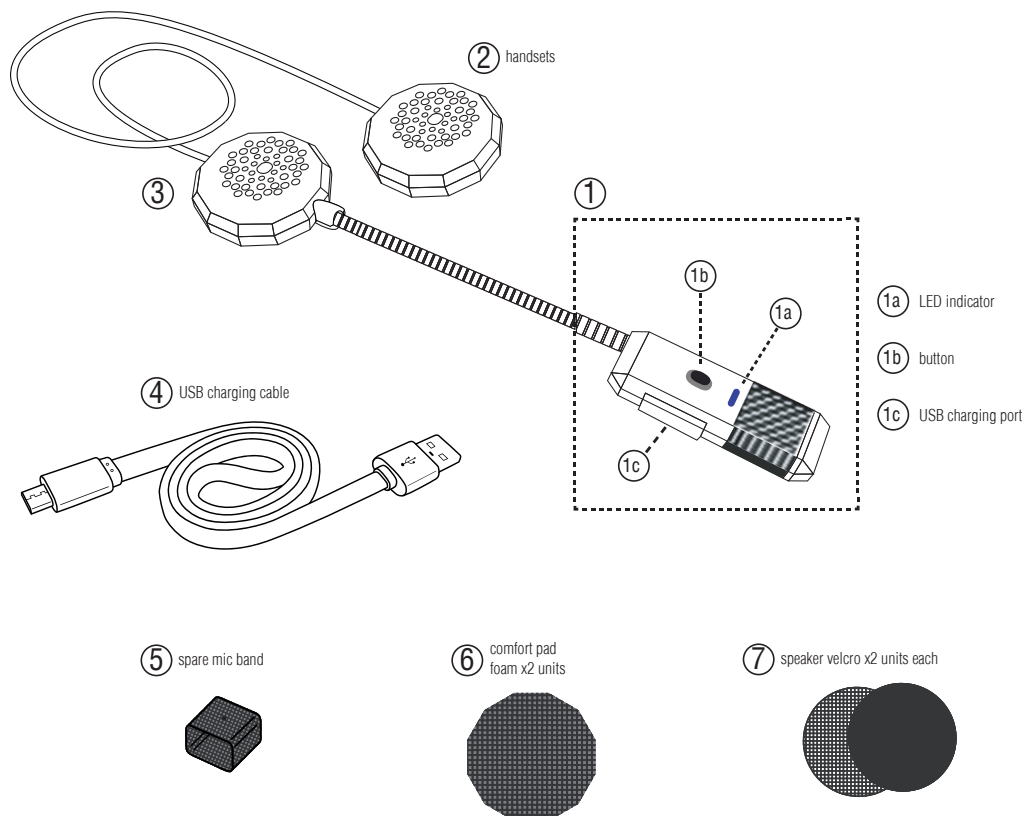


URBAN COMMUNICATION UC02/ UC03

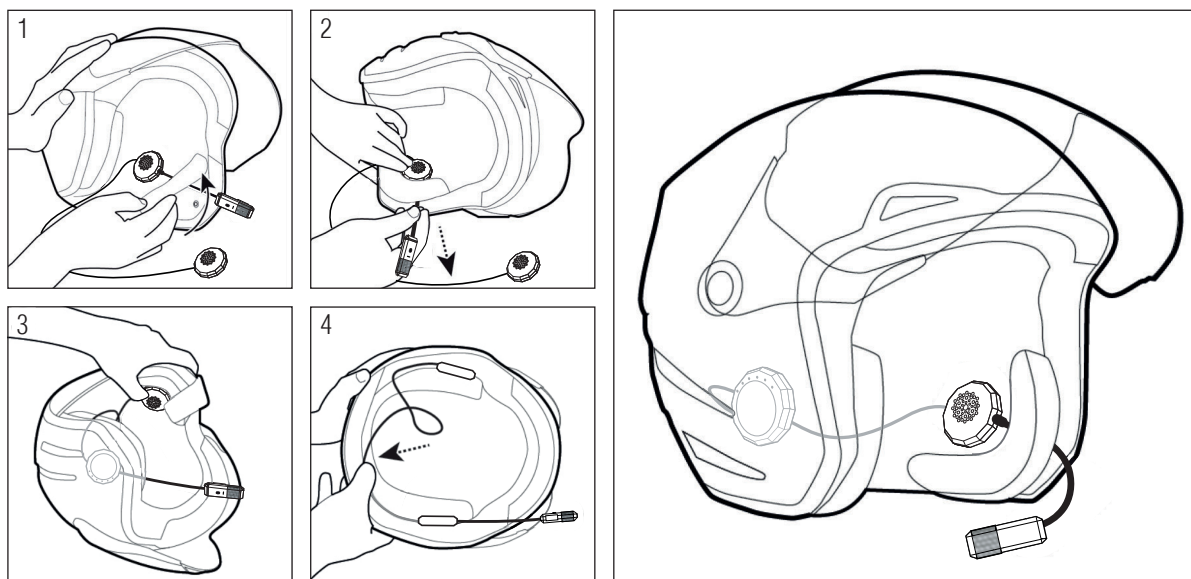
Mobile, Music & Maps for Helmets
HANDSFREE



Components



Installation

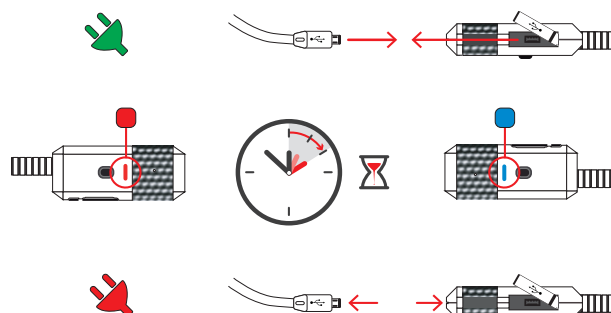


The Shad HANDSFREE is very easy to install into a helmet. Remove the side padding from the inside of the helmet (if it can be removed) and place the handsets (2) and (3) at the height of your ears. The device is designed so that the main unit with the boom microphone is placed on the left side. The wire between handset (2) and (3) must be stored inside the helmet, under the padding. In order to fix the headphones, two velcro pads are provided (male and female) with an adhesive backing (7). In case you need to use the velcro, stick the male part of the pad onto the device and the female part onto the inside of the helmet.

Depending on the internal configuration of each type of helmet, it may be necessary to use the entire velcro pad or only a part of it (see figure 2). In some cases, it may only be necessary to stick the male part onto the device as the inside of the helmet may have padding that can serve as velcro (female).

If needed, comfort pads (6) to place on the headphones are also provided, in order to improve comfort against your skin. Place the microphone (1) on the front section of the helmet close to and oriented towards your mouth.

Charging



Before using your Shad HANDSFREE device for the first time, you must charge the device completely.

Connect the terminal (1c) to the provided USB charging cable (4) and then connect the cable to a USB charging port.

While charging, the red LED light will switch on (1a) and it will change to blue once charging has been completed.

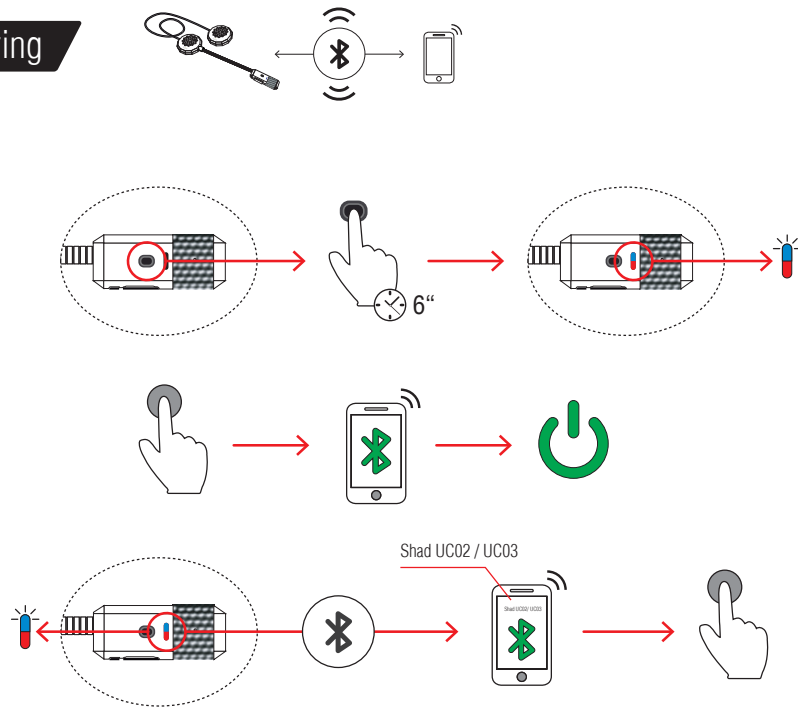
NOTE : Don't pull on the cable to disconnect it from the USB port.

NOTE : As time goes by, batteries gradually lose their charge. This is why it's important to charge the battery fully before using the device and allow the battery to use almost all of its charge in between charging cycles.

NOTE: To ensure proper function, do not operate the Shad HANDSFREE device while charging.

WARNING: If you plan to store your Shad device for a long period of time, be sure to recharge it at least once every six months to ensure perfect battery performance.

Linking/Pairing

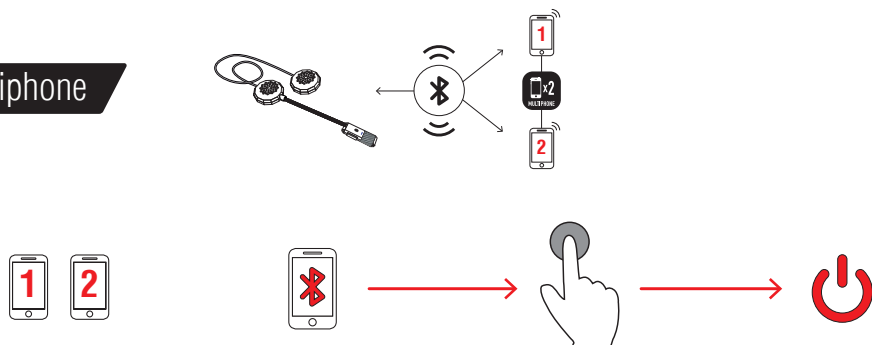


To use the Shad HANDSFREE, it's necessary to pair it to the Bluetooth® device you wish to connect it to (mobile phone, GPS navigator). While the device is switched off, hold the control button (1b) until the LED indicator (1a) begins flashing in Red and Blue. The mobile phone or GPS navigator will find the device under the name Shad UC02/ UC03. Select the device and, if necessary, enter the access code: 0000.

NOTE: Pairing is a process that only needs to be completed once. When the Shad UC02 / UC03 is paired to a specific device, both devices will connect automatically when switched off and on.

NOTE: Depending on your phone's Operating System software version, there is a possibility that during the phone's Bluetooth® device search you have to turn off the phone's Bluetooth® functionality and turn on again after 2 or 3 seconds so that the Shad device is found properly. This is normal and it should only happen during the first pairing with that phone.

Multiphone



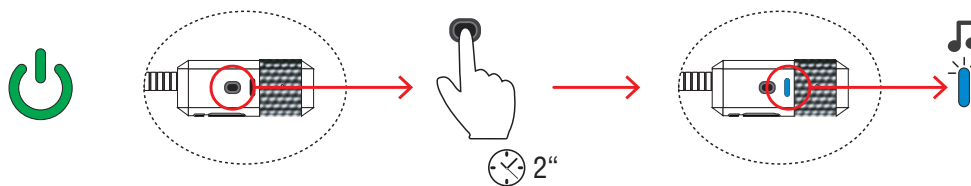
To make connexion easier, please make sure that Bluetooth® is off in both devices.

1 Pair mobile 1 with Shad HANDSFREE (follow steps on Linking / Paring section).
Turn off Bluetooth® on mobile 1 and the Shad HANDSFREE device.

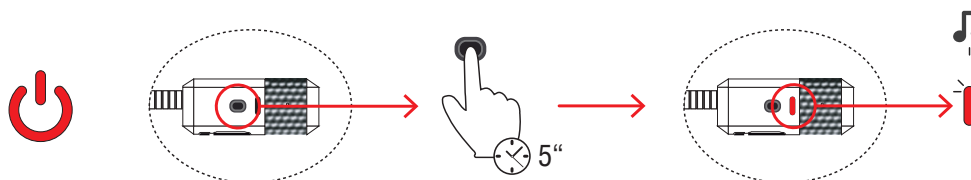
2 Now pair mobile 2 to the same Shad HANDSFREE device (follow steps on Linking / Paring section).

Once mobile 2 is paired, you can turn on Bluetooth® on mobile 1.

Switching on/off



Switching on : press and hold the button (1b) for a few seconds until the speakers provides an acoustic signal and the LED indicator (1a) begins to flash in Blue.

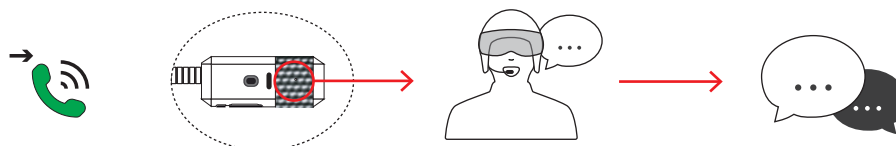


Switching off : press and hold the control button (1b) for a few seconds until the speakers provides an acoustic signal and the LED indicator (1a) begins flashing in red before the device powers off.

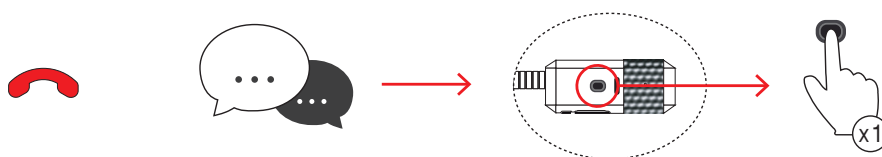
Call functions



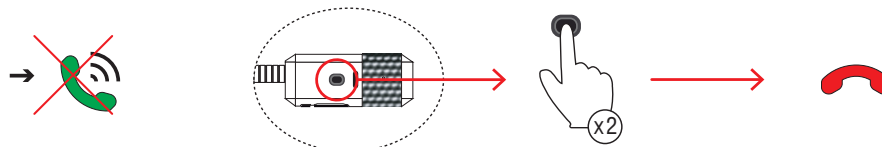
When there is an incoming call, the speakers will provide an acoustic signal.



Answering through a voice command: answer the call by speaking any word out loud (e.g. "Answer!").



Ending a call: press the control button (1b) only once or wait until the other person hangs up.



Rejecting an incoming call: press the control button (1b) twice, as soon as you hear the acoustic signal for an incoming call.

Answering by pressing the button (1b) : press the control button (1b) only once.

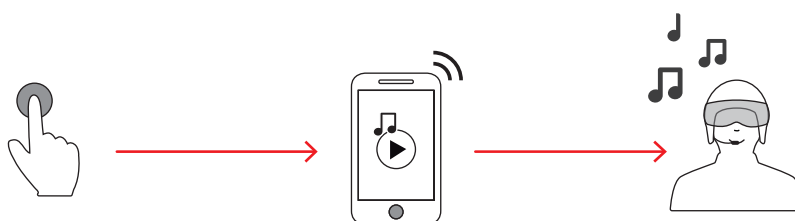
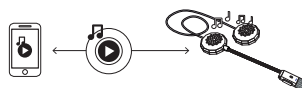
Callback to the last dialed number: press the control button (1b) twice. This depends on the features and configuration of your mobile phone.

Adjusting the volume

The Shad HANDSFREE device is pre-programmed with a volume level that allows for optimal listening at speeds of up to 80 km/h (50 mph). To adjust the volume, use the volume controls on the connected device.

Volume perception may vary depending on the position and separation of the speakers from your ear, as well as the type of helmet and motorcycle, external conditions and other factors.

Playing music from your mobile phone



Once the Shad HANDSFREE is paired to a mobile phone capable of transmitting music through Bluetooth® A2DP, activate music on the phone and it will immediately be heard through the Shad HANDSFREE device. Music and volume can only be controlled from the phone or device, depending on its features and configuration.

While you listen to music, all call features will remain active. In case you receive an incoming call, music will pause and, when the call ends, playback will resume. Likewise, music will resume after making a call.

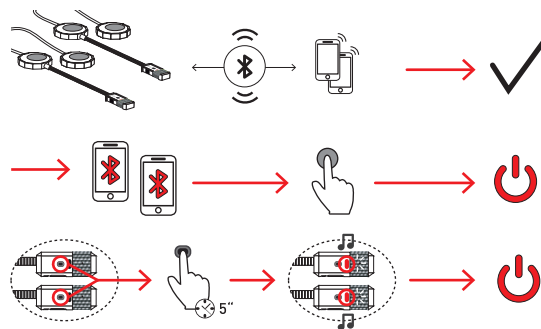
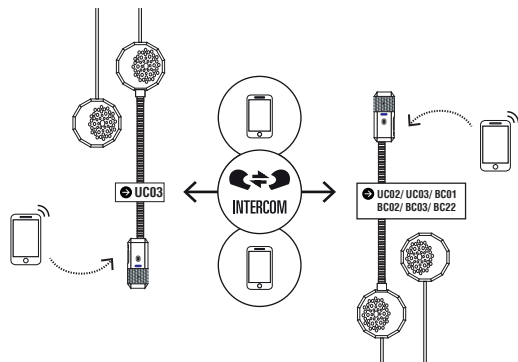
Technical Specifications

- Bluetooth® specification v4.0 Class 2.
- Bluetooth® Profiles: HSP v1.2, HFP v1.6, EDR, A2DP v1.2, AVRCP v1.4, DI v1.3.
- Up to 10 meters range.
- Foam speaker covers with Velcro.
- One button multifunction control.
- Microphone with noise reduction
- Polymer Lithium Battery 110 mAh.
- Stand by time: up to 60 h.
- Charging time: 2 h.
- Talk time: 7 h.
- Total weight: 35 gr.
- Operation frequency: 2.4 GHz
- Power supply: DC 5.0V.

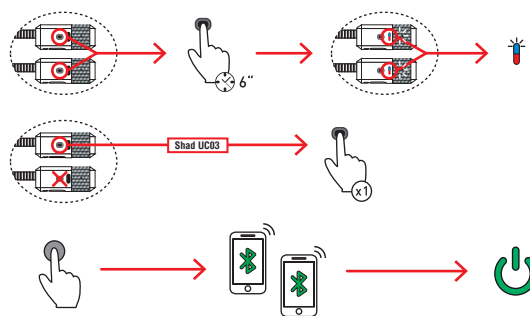
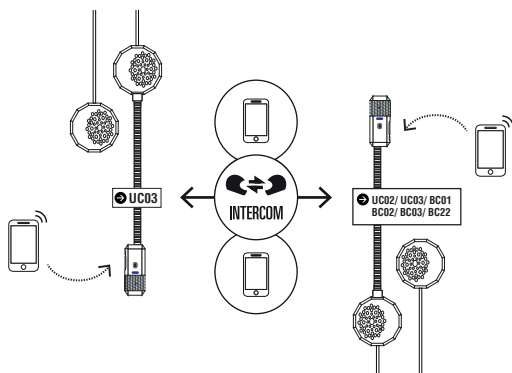
Intercom Pairing

Dual Link: Pairing as an Intercom while maintaining hands-free function.

- . Complete pairing with the phone as described in the paragraph above "pairing to a mobile phone or GPS navigator".
- . Switch off Bluetooth® on both phones.
- . Make sure both Shad devices are switched off.

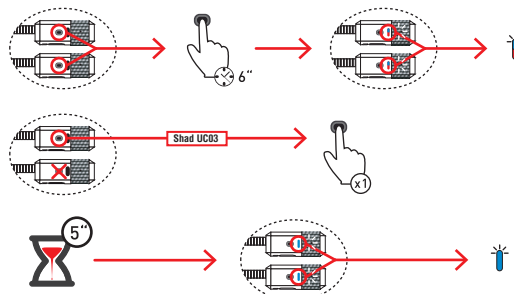
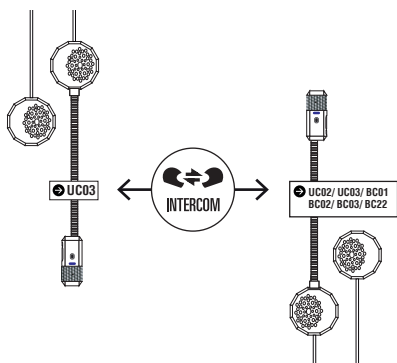


- . Press and hold the control buttons (1b) on both Shad devices until the LED indicators of both devices begin flashing in Red and Blue.
- . Briefly press the control button of the Shad UC03 device. After a few seconds, both devices will pair and intercom functions will be activated.
- . Activate Bluetooth® on the phones again. Depending on your phone model, it will automatically detect the device paired. Otherwise, you will need to select it manually.



Single Link: Pairing as intercom only (without hands-free features):

- . Make sure both Shad devices are switched off.
- . Press and hold the control buttons (1b) of both Shad devices until the LED indicators of both devices begin flashing in Red and Blue.
- . Briefly press the control button of the Shad UC03 device. After a few seconds, both devices will pair and intercom functions will be activated.



Intercom Functions

Activating and deactivating intercom functions between two Shad devices: once both Shad devices have been paired and switched on, press the UC03 control button (1b) for two seconds to activate or deactivate intercom functionality.

Adjusting the volume for intercom functions: you can adjust the volume by briefly pressing the control button (1b) of the UC03. It will then cycle through three levels: LOW < MEDIUM < HIGH < LOW...

WARNING: User information

Carefully read the manufacturer's Shad product instruction manual and follow its recommendations. Do not make changes or modifications to prevent affecting the normal operation of the device and overriding the operations for which they were created.

Manufacturer's Declaration MATGroup™

Devices, marketed under the Shad brand, have been manufactured according to the requirements stipulated by the applicable regulation at the national, European and international level, and meet the quality and safety standards that all electronic audio devices must have.

This device has been tested and meets all the requirements needed to provide reasonable protection against harmful interference in a residential facility. This device generates, uses and can radiate radiofrequency energy and, if it is not installed or used according to the instructions, it can cause radio communication interferences. However, there is no guarantee that interferences will not occur in a specific facility. If this device causes harmful interferences to radio or television reception, it can be checked by turning it on and off. It is recommended that the user trying to correct the interference do so by using one of the following measures:

- Move the receiving antenna to a new direction or position.
- Increase the distance between the device and the receptor.
- Connect the device to a socket on a different circuit than that of the receptor.
- If the problem persists, contact your distributor or a radio/TV technician for help.

Copyright

MATGroup™ is the sole owner of the content rights of this instruction manual. All intellectual property rights are reserved. Shad brand and technologies are registered and patented by MATGroup™.

Care and maintenance

The Shad HANDSFREE device uses components with the latest technology and is manufactured to high standards.

To keep your device from inadvertently becoming damaged, please read the following recommendations carefully:

- Do not attempt to open any of the system components, since the electronic parts inside it may become damaged. Do not attempt to open or change the battery as it may be dangerous.
- Keep the Shad HANDSFREE out of the reach of children.
- Keep the Shad HANDSFREE in a dry place. Humidity and condensation may damage the electronic circuits.
- Avoid exposing the device to extreme temperatures. Intense cold may create condensation inside the components as these warm up. Extreme heat may damage the battery, circuits or casings.
- Do not drop, hit or bend the components as the internal circuits may become damaged.
- Do not paint or decorate the Shad HANDSFREE as the casings may become damaged or impede correct operation.
- Do not use chemical products, solvents or detergents to clean the Shad HANDSFREE as these may damage the device.

IMPORTANT SAFETY INFORMATION

Safety warning

The use of electronic communication devices while driving a motor vehicle or performing any kind of activity requiring your full attention can lead to serious accidents, injuries or even death.

You are responsible for the proper use of the Shad device, and for ensuring that it is compatible and does not violate traffic, safety or any other laws or provisions in your country or jurisdiction.

The manufacturer warns you that you must respect the current traffic laws to prevent traffic accidents and recommends avoiding risky situations. Exercise due caution while driving and pay attention to the road. You are responsible for keeping your attention on driving and traffic, weather conditions and the road, as well as avoiding any distraction that may affect or distract your attention from driving.

Avoid using this product at gas stations, fuel tanks or close to explosive substances. Keep the volume to reasonable levels, preventing noise pollution.

Hearing loss

The prolonged use of audio devices, together with excessive volume, can lead to a loss or decrease of hearing.

Pacemaker, hearing aids and other medical devices

Ensure to verify that there are no interferences between your medical devices and the Shad electronic communication device, respecting the applicable regulations and the manufacturer's instructions for both devices.

In any case, we recommend that you consult your doctor and the manufacturer of the medical device on the terms of use to verify their compatibility. Follow the suggested precautionary measures.

Environmental warning



This symbol advises on the applicable treatment of electronic devices at the end of their service life in the European Union and in European countries with a selective waste collection system. It is used to indicate that this product cannot be treated as normal household waste and must be sent to a specific collection point for electronic devices.

By ensuring this product is disposed of correctly, you will help prevent negative consequences for the environment and human health that could arise from improper handling when disposing of this product. Recycling helps conserve natural resources. To receive detailed information about recycling this product, please contact your city hall, the nearest recycling collection point or the establishment where you purchased the product.

GUARANTEE

This product has a 2-year guarantee, starting after the time of purchase. The guarantee is only valid with the presentation of the sales receipt or original purchase invoice issued at the Shad point of sale, showing the purchase date. The guarantee does not cover natural wear defects from the use or improper use of the device. We recommend that you read the instruction manual and respect all the indications on the correct use of this product, as well as the maintenance conditions and the manufacturer's care label. The guarantee does not cover damages caused to the device due to an accident, handling, modifications, repairs, corrosive materials, liquids, improper air flow or any other cause, including events of force majeure, or defects due to the use of accessories that are not Shad originals. Likewise, any modification to or removal of the stamps, labels or product indications invalidate the guarantee.

Limitation of liability

In addition to the legal grounds for limitation of liability, the manufacturer shall not be held responsible for any consequences derived from the improper use of the product, or any case in which the user employs it in violation of the traffic law, safety regulations or any other regulation.